

# Shirehampton Road Zebra Crossing



July 2015

**The Henleaze, Stoke Bishop and Westbury-on-Trym Neighbourhood Partnership has selected a scheme to introduce a pedestrian crossing close to the entrance of Stoke Lodge and to improve pedestrian facilities at the mini roundabout with Shirehampton Road and Druid Hill.**



We are proposing to install a zebra crossing on Shirehampton Road, West of the entrance to Stoke Lodge. This will provide a crossing for anyone wishing to access Stoke Lodge and the new playground, including children from Stoke Bishop Primary School.

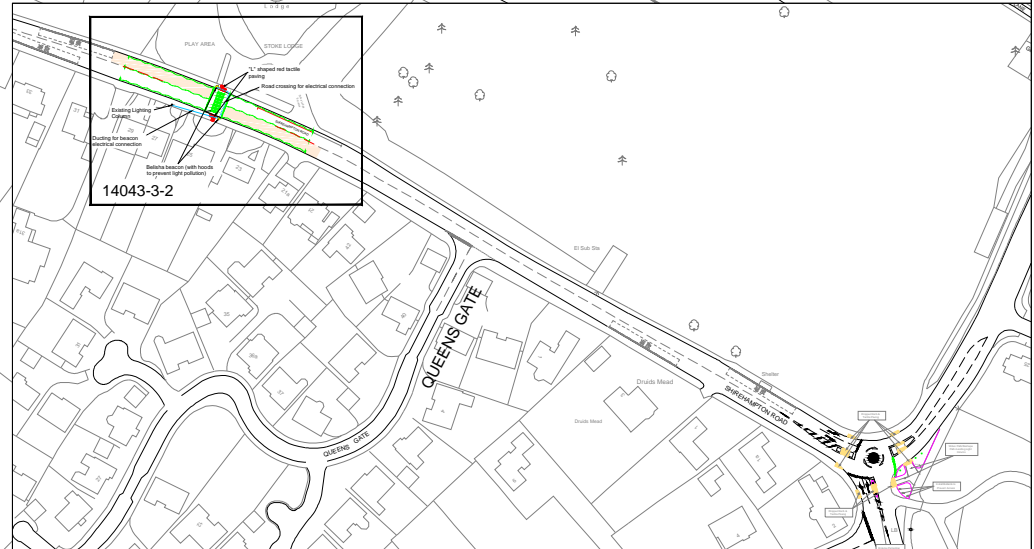
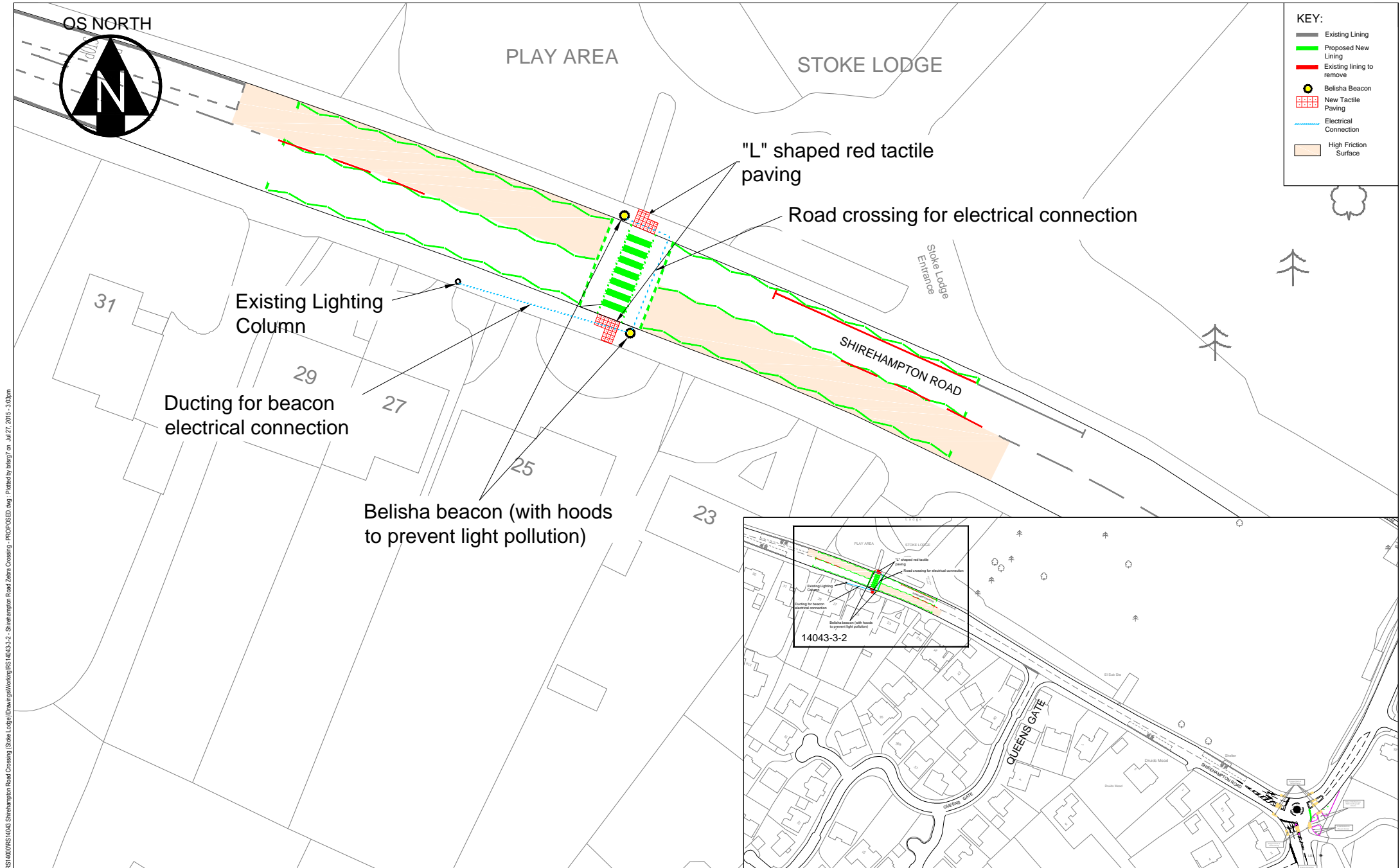


At the mini roundabout, we are proposing to install a larger pedestrian refuge island on the Druid Hill approach, install tactile paving at all the crossings and alter the kerblines on the Eastern side.



We would be grateful if you would review the proposals and please provide any comments or suggestions you may have.

These are only preliminary proposals that have been developed for consultation. Information that we gain from this consultation may be used to modify the proposals.



S:\14043\14043-3-2\14043-3-2 - Shirehampton Road Zebra Crossing - PROPOSED.dwg - Plotted by breg/c on 27/07/2015 - 3:05pm

**Place**  
 Peter Mann (Service Director, Transport)  
 Brunel House  
 St. Georges Road  
 Bristol  
 BS1 5UY




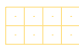


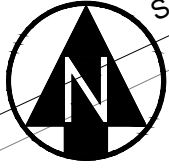
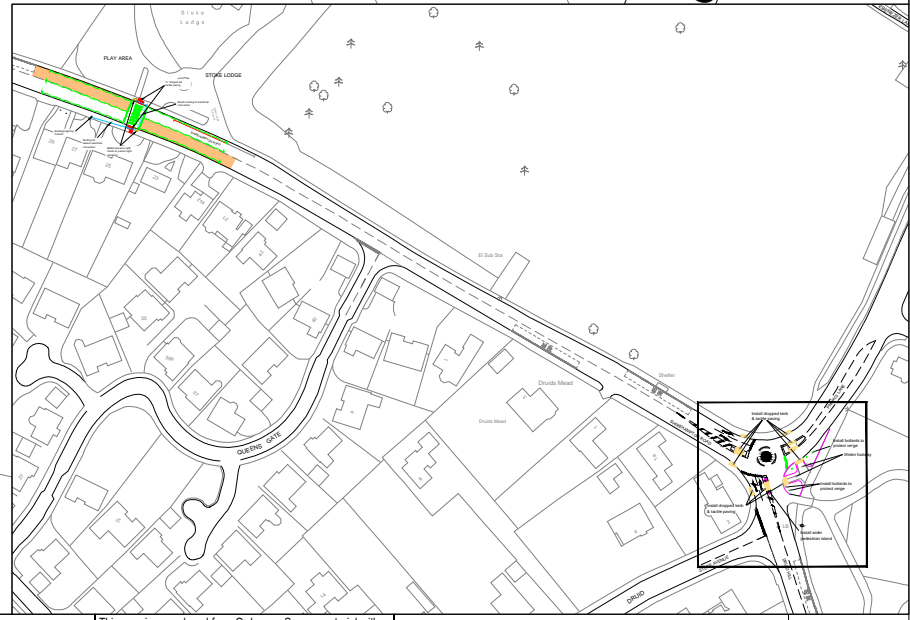
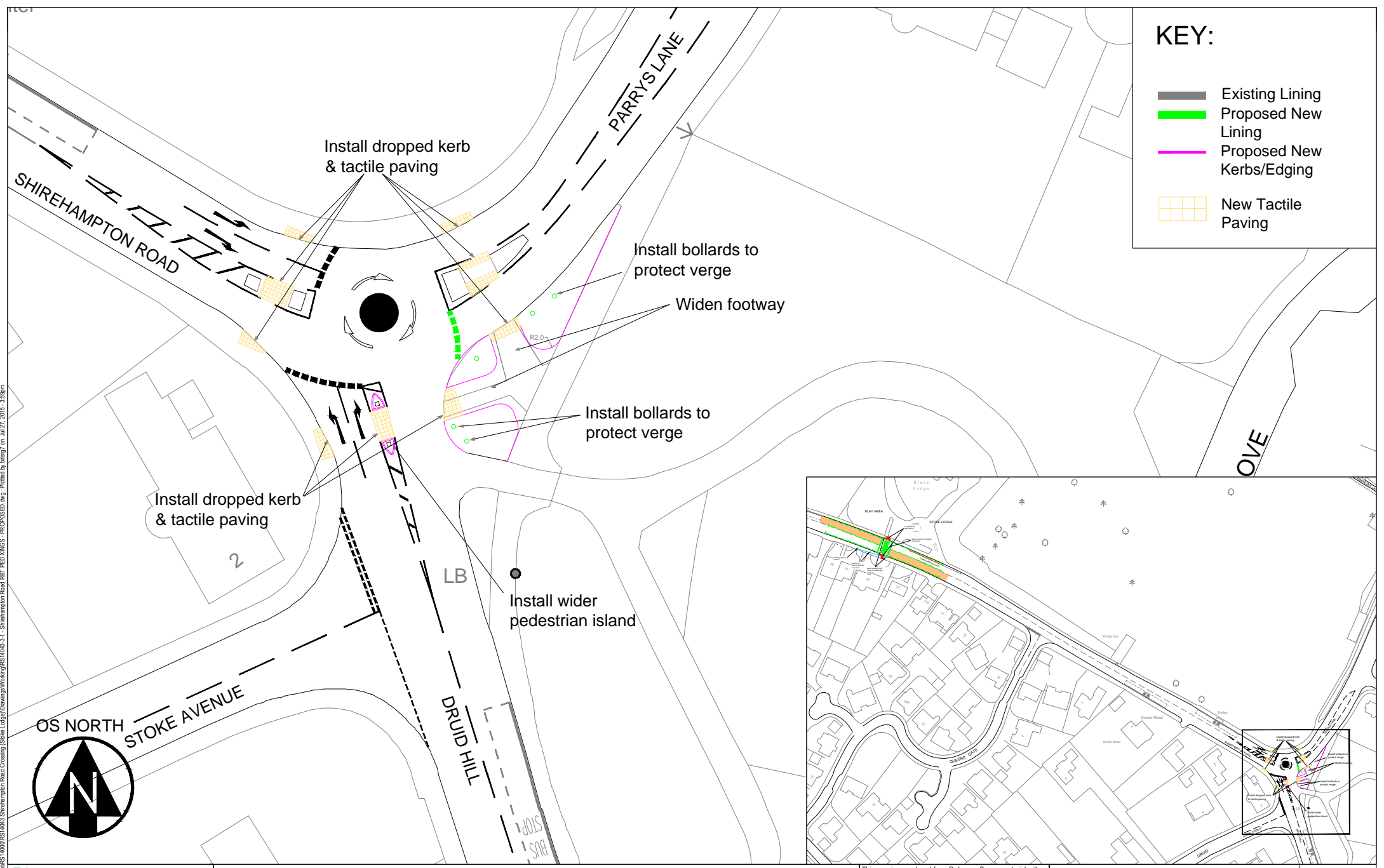
HIGHWAYS SERVICE  
**Shirehampton Road**  
 Stoke Bishop, BS9, Bristol  
 Proposed Zebra Crossing

This map is reproduced from Ordnance Survey material with the permission of Ordnance Survey on behalf of the Controller of Her Majesty's Stationery Office © Crown copyright. Unauthorised reproduction infringes Crown copyright and may lead to prosecution or civil proceedings.  
 Bristol City Council.  
 100023406. 2014

Dwg <b>RS 14043-3-2</b>	Rev C
Scale 1:500 @ A4	
Date 27 July 2015	Init D.G

**KEY:**

-  Existing Lining
-  Proposed New Lining
-  Proposed New Kerbs/Edging
-  New Tactile Paving



**Place**  
 Peter Mann (Service Director, Transport)  
 Brunel House  
 St. Georges Road  
 Bristol  
 BS1 5UY



HIGHWAYS SERVICE  
 Shirehampton Road  
 Stoke Bishop, BS9, Bristol  
 Proposed General Arrangement - Roundabout & Pedestrian Islands

This map is reproduced from Ordnance Survey material with the permission of Ordnance Survey on behalf of the Controller of Her Majesty's Stationery Office © Crown copyright. Unauthorised reproduction infringes Crown copyright and may lead to prosecution or civil proceedings. Bristol City Council.

Dwg <b>RS 14043-3-1</b>	Rev <b>B</b>
Scale <b>1:500 @ A4</b>	Date <b>17 July 2015</b>
Date <b>17 July 2015</b>	Init <b>D.K./D.G</b>

S:\TRAFFIC\Traffic\021 Shirehampton Road Crossing (Shirehampton Road) - PROPOSED.dwg - Pinned by bhlg7 on Jul 27, 2015 - 3:59pm

# Shirehampton Road zebra crossing

If you have any suggestions then please contact the Traffic Management Group by 26th August using the contact details below.

Email:

[highways.traffic@bristol.gov.uk](mailto:highways.traffic@bristol.gov.uk)

Write to:

**TRAFFIC MANAGEMENT  
(RS14043/RG)  
FREEPOST RTKJ-SGBZ-ULSH  
P.O BOX 3176  
BRISTOL  
BS3 9FS**

## Neighbourhood Partnerships

This work has been identified as a priority by the Henleaze, Stoke Bishop and Westbury-on-Trym Neighbourhood Partnership. If you would like more information about contacting or getting involved with your local Neighbourhood Partnership, then information can be found at the following web page:

[www.bristol.gov.uk/  
neighbourhoodpartnerships](http://www.bristol.gov.uk/neighbourhoodpartnerships)

Alternatively you can contact your Neighbourhood Partnership using the contact details below:

Email: [neighbourhood.partnerships@bristol.gov.uk](mailto:neighbourhood.partnerships@bristol.gov.uk)

## Translation / Special requirements

If you would like this information in another language, Braille, audio tape, large print, easy English, BSL video or CD rom or plain text please contact: Traffic Management on **0117 903 6822**.